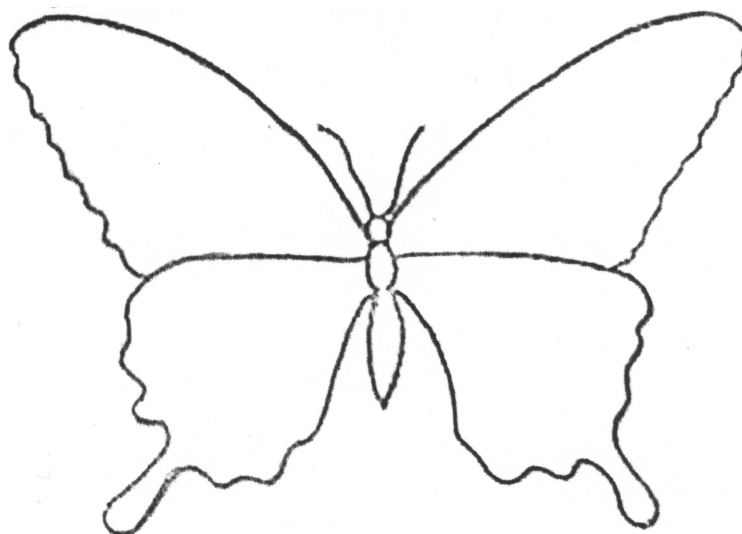


IVY CREEK NATURAL AREA COMMON BUTTERFLY IDENTIFICATION GUIDE

This guide is intended to serve as a quick field reference for identifying the most common butterflies found at Ivy Creek Natural Area. The characteristics listed are generalizations based on observation and may vary with individual butterflies. Accurately identifying species in flight requires quick observation of size, coloration, location and flight pattern.

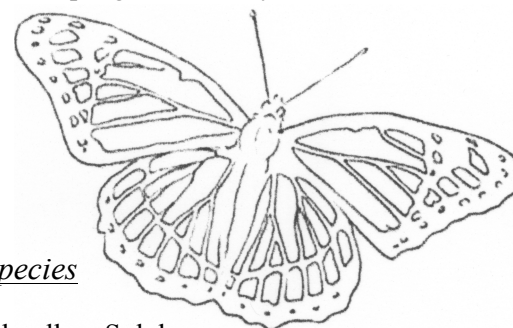


LARGE (3 ½" – 5")

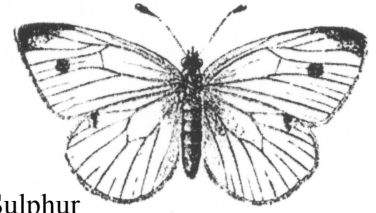
<u>Color</u>	<u>Features and Characteristics</u>	<u>Species</u>
Yellow	Black stripes and tails. Very common.	Eastern Tiger Swallowtail
White	Black stripes and tails. Strong flier.	Zebra Swallowtail
Black	<ul style="list-style-type: none"> Tails. Green on hindwing. In/near wooded area. Tails. Green on hindwing. In open sunny area. Tails. Blue on hindwing. Tails. Blue on hindwing. Faint black stripes on underside of wings. 	Pipevine Swallowtail Spicebush Swallowtail (M) Spicebush Swallowtail (F) Eastern Tiger Swallowtail (F) (Dark Form)
Brownish Orange	<ul style="list-style-type: none"> Black stripes on wings. Often gliding. Silver spots on underside of wings. Speckled. 	Monarch Great Spangled Fritillary

MEDIUM (2 ½" – 3 ½")

<u>Color</u>	<u>Features and Characteristics</u>	<u>Species</u>
Yellow	Bright yellowish-green. Often flies in a straight line.	Cloudless Sulphur
Black	<ul style="list-style-type: none"> Greenish blue hindwing. Glides near woods' edge Tails. Yellow wing border. Yellowish-beige wing border. Often sunning. 	Red-Spotted Purple Black Swallowtail Mourning Cloak
Brownish Orange	<ul style="list-style-type: none"> Speckled. Flies low to ground in sunny areas. Stripes on wings. Resembles monarch, but smaller. Angular wings. Often lands on side of tree. 	Variegated Fritillary Viceroy Question Mark



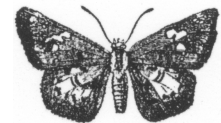
IVY CREEK NATURAL AREA COMMON BUTTERFLY IDENTIFICATION GUIDE



SMALL (1 ½" – 2 ½")

<u>Color</u>	<u>Features and Characteristics</u>	<u>Species</u>
Yellow	Black border on wings. Flies in open sunny areas.	Clouded Sulphur
Orange	Black border on wings. Flies in open sunny areas.	Orange Sulphur
White	<div> <div></div> <div> <p>Mostly white. Small black area on tip of forewing. Orange patch on tip of forewing. Fairly slow. Black border on wings. Hindwings may be dark.</p> </div> </div>	<p>Cabbage Butterfly Falcate Orange Tip Clouded or Orange Sulphur (F) (White Form)</p>
Black	Orange-red stripe on wing. Lands on side of tree.	Red Admiral
Brownish Orange	<div> <div></div> <div> <p>Blue eyespots. Flies low to the ground. Angular wings. Similar/darker than Question Mark. Lightly speckled. Around bushes near open area. Black and white on tips of forewing. Sunny areas. Speckled with black and a little white. Woods' edge</p> </div> </div>	<p>Buckeye Comma Tawny Emperor Common Snout Painted Lady or American Painted Lady</p>
Dark Brown	<div> <div></div> <div> <p>Yellow spot on forewing. Low around trees/bushes. White speckled. Mid-level by bushes near open area. Silvery white spot on underside of forewing. Sunny.</p> </div> </div>	<p>Common Wood Nymph Hackberry Butterfly Silver Spotted Skipper</p>
Light Brown	Low around brush/trees	Little Wood Satyr

VERY SMALL (½" – 1 ½")



<u>Color</u>	<u>Features and Characteristics</u>	<u>Species</u>
Yellow	Black on edge of wings. Sunny open area.	Little Sulphur
Brownish Orange	<div> <div></div> <div> <p>Speckled with black. Very common.</p> </div> </div>	<p>Silvery Checkerspot Pearl Crescent</p>
Orange	Appears to be skipping in flight. Common.	<p>Sachem, Fiery Skipper Least Skipper</p>
Brown/ Black	<div> <div></div> <div> <p>Appears to be skipping in flight. Appears in early spring</p> </div> </div>	<p>Northern/Southern Cloudy Wing Sleepy Dusky Wing Roadside Skipper</p>
Purple/ Blue	<div> <div></div> <div> <p>Rubs tiny tails together at rest. Very common. No tails. Brighter blue than Eastern Tailed.</p> </div> </div>	<p>Eastern Tailed Blue (M) Spring Azure (Common Blue)</p>
Silvery Blue	<div> <div></div> <div> <p>Dark topside of wings. Rubs tiny tails together. Dark topside of wings. Longer tails than Blue</p> </div> </div>	<p>Eastern Tailed Blue (F) Common Hairstreak</p>